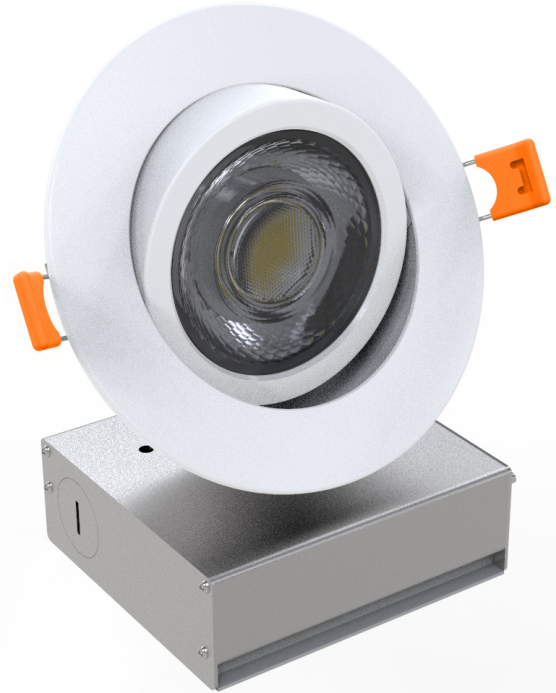


**Sunlite 82083 4-Inch Round Recessed Gimbal Downlight Fixture, 12 Watts, 1000 Lumens, Color Selectable 27K/30K/35K/40K/50K, 80 CRI, Dimmable, UL Listed, Matte White, For Entryways, Bedrooms & Hallways**



**DESCRIPTION:**

The simple design of these Sunlite LED 4-inch Round Recessed Gimbal Downlight Fixture will add an elegant touch to any decor. Its gimbal design allows for tilting the light head 25 degrees in either direction, making it suitable for sloped ceilings and directional lighting. This dimmable fixture uses only 12 watts of electricity but provides as much light as a 75-watt light bulb with an output of 1000 lumens of light. These fixtures allow you to choose the color temperature at the time of installation. Select 2700K Warm White, 3000K Warm White, 3500K Neutral White, 4000K Cool White or 5000K Daylight depending on your preference using a switch located on the back of the fixture. can be dimmed (10%-100%) when installed with an LED compatible dimmer. High color rendering at 80 CRI. Dimmer List: Leviton 6161, 6631, 6633P, 6681, 6684, MIR-600, IPL06-10Z. Lutron: CTCL-153PH-WH, DV-600P, S-600, SLV-600, TG-600, TG600PH, DVCL-153P. Provides up to 50,000 hours energy efficient light that only uses 12 watts of electricity. No maintenance, long-life LED technology means you won't need to climb ladders to replace difficult to reach bulbs. Ideal for Entryways, Bedrooms, Kitchen, Hallway, Bathroom & more. These Energy Star Certified fixtures have a low annual estimated energy installing these fixtures may qualify you for state or local energy rebate programs. Estimated annual energy costs of \$1.45 (Based on 3 Hrs/Day at \$0.11/kWh). UL Listed for safety and quality. This fixture can be installed in new construction or as a remodel without the need of any housing. The remote driver box connects to a 120v line voltage power source. Fixture Dimension: 1.6" Height x 4.84" Diameter.

**FEATURES:**

- **GIMBAL DESIGN** – Its gimbal design allows for tilting the light head 25 degrees in either direction, making it suitable for sloped ceilings and directional lighting.
- **COLOR SELECTABLE** - This dimmable fixture uses only 12 watts of electricity but provides as much light as a 75-watt light bulb with an output of 1000 lumens of light. These fixtures allow you to choose the color temperature at the time of installation. Select 2700K Warm White, 3000K Warm White, 3500K Neutral White, 4000K Cool White or 5000K Daylight depending on your preference using a switch located on the back of the fixture.
- **DIMMABLE** - It can be dimmed (10%-100%) when installed with an LED compatible dimmer. High color rendering at 80 CRI. Dimmer List: Leviton 6161, 6631, 6633P, 6681, 6684, MIR-600, IPL06-10Z. Lutron: CTCL-153PH-WH, DV-600P, S-600, SLV-600, TG-600, TG600PH, DVCL-153P.
- **LONG LIFE** - Provides up to 50,000 hours energy efficient light that only uses 12 watts of electricity. No maintenance, long-life LED technology means you won't need to climb ladders to replace difficult to reach bulbs. Ideal for Entryways, Bedrooms, Kitchen, Hallway, Bathroom & more.
- **ENERGY STAR & UL LISTED** - These Energy Star Certified fixtures have a low annual estimated energy installing these fixtures may qualify you for state or local energy rebate programs. Estimated annual energy costs of \$1.45 (Based on 3 Hrs/Day at \$0.11/kWh). UL Listed for safety and quality. This fixture can be installed in new construction or as a remodel without the need of any housing. The remote driver box connects to a 120v line voltage power source. Fixture Dimension: 1.6" Height x 4.84" Diameter.

## SPECIFICATIONS:

### General Characteristics

|                                |               |
|--------------------------------|---------------|
| <b>Average Rated Hours</b>     | 50000         |
| <b>Finish</b>                  | White         |
| <b>Average Life Span Years</b> | 46            |
| <b>Dimmable</b>                | Yes           |
| <b>Dimming Percentage</b>      | 10-100%       |
| <b>Material</b>                | Aluminum & PC |
| <b>Lens Finish</b>             | Clear         |
| <b>Application</b>             | Residential   |

### Electrical Characteristics

|                              |              |
|------------------------------|--------------|
| <b>Watts</b>                 | 12           |
| <b>Volts</b>                 | 120          |
| <b>Equivalent Wattage</b>    | 75           |
| <b>LED Chip Manufacturer</b> | 2835         |
| <b>Power Factor</b>          | 0.95         |
| <b>Temperature</b>           | -4°F - 113°F |

### Light Characteristics

|                                  |                     |
|----------------------------------|---------------------|
| <b>Lumens Brightness</b>         | 1000                |
| <b>Color Rendering Index CRI</b> | 80                  |
| <b>Emitted Color</b>             | CCT Selectable      |
| <b>Color Temperature Kelvin</b>  | 27K/30K/35K/40K/50K |
| <b>Beam Angle</b>                | 40°                 |

### Fixture Characteristics

|                           |          |
|---------------------------|----------|
| <b>Shape</b>              | Round    |
| <b>Number of Lights</b>   | 1        |
| <b>Mounting</b>           | Recessed |
| <b>IC Rating</b>          | Yes      |
| <b>Fixture Technology</b> | LED      |
| <b>Use Location</b>       | Indoor   |

### Additional Features

|                             |                          |
|-----------------------------|--------------------------|
| <b>Safety Rating Mark</b>   | UL Listed - Wet Location |
| <b>Safety Rated For USA</b> | Yes                      |
| <b>Energy Star</b>          | Yes                      |
| <b>Energy Star Number</b>   | 2375962                  |
| <b>Mercury Free</b>         | Yes                      |

### Product Dimensions

|                               |                            |
|-------------------------------|----------------------------|
| <b>Size</b>                   | 4"                         |
| <b>MOL (in)</b>               | 1.65                       |
| <b>Diameter (in)</b>          | 4.84                       |
| <b>Item Dimension (in)</b>    | (W) 5.07 (H) 5.07 (D) 3.55 |
| <b>Item Weight (lb)</b>       | 24.77                      |
| <b>Package Dimension (in)</b> | (W) 5.07 (H) 5.07 (D) 3.55 |
| <b>Package Weight (lb)</b>    | 0.97                       |

### Product Data

|                       |              |
|-----------------------|--------------|
| <b>Case Unit Rate</b> | 24           |
| <b>Item UPC</b>       | 653703820835 |
| <b>Warranty Years</b> | 5            |

**ACCESSORIES:**

Catalog # 88154-SU  
LED